



**Reliable • Sustainable • Renewable**

**The universal modular system for  
PV installations**

**Aesthetic energy architecture for  
very attractive pricesk!**





## Building integrated solutions



The following architecturally attractive solutions can be implemented with our kits.



### In the facade integrated shaded terraces



Also, individual solutions can be implemented with our SunclickPV® system, such as the canopy at top with 15 modules. Available are two types of modules:

**1. Transparent M40 modules** with an output of 170 Wp with a transparency level of %40.

**Performance with 15 modules: 2550 Wp.**

**2. Slightly transparent P60 modules** with a degree of transparency of about %10.

**Performance with 15 modules: 3750 Wp.**

The modules are provided on the long sides with a weatherproof seal rubber. With an aluminum bar a secure and tight attachment is made on the aluminum beams (see image on page 2).

**Inverter:** REW Premium Power Inverter - High Class Solution for small PV,

PPI2 (for M40 modules) or PPI4 (for P60 Module), 2,400 W, 1 phase, 5 year warranty, **Made in Germany.**

The canopy below is designed for 8 to 10 modules and also available as a kit.





Large sitting areas as SunclickPV® kits with all parts for easy construction



### Contents of the kits:

**Frame:** aluminum powder coated in white color (RAL 9001). Size 5.06 x 5.06 m.

Delivered in a kit: All parts can be easily assembled with angle sections and fixed with self-tapping stainless steel screws. A detailed installation manual with pictures is included.

**Solar modules:** Premium PV modules of Almaden made of laminated safety glass (LSG) The two hardened, only 2 mm thick glass panes are almost indestructible and designed for a lifetime of 30 years. A description and the certification of documents are included in the detailed module brochure that can be called with the link on p.4.

Available are two types of modules:

**1. Transparent M40 modules** with an output of 170 Wp with a transparency level of %40. **Performance with 15 modules: 2550 Wp.**

**2. Slightly transparent P60 modules** with a degree of transparency of about %10.

**Performance with 15 modules: 3750 Wp.**

The modules are provided on the long sides with a weatherproof seal rubber. With an aluminum bar a secure and tight attachment is made on the aluminum beams (see image on page 2).

**Inverter:** REW Premium Power Inverter - High Class Solution for small PV,

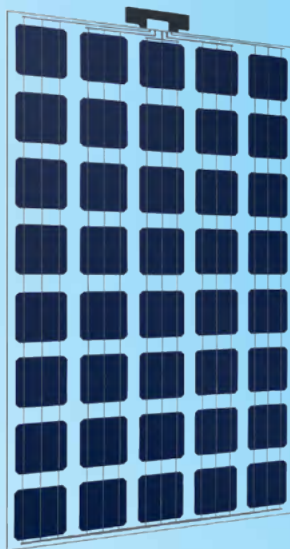
PPI2 (for M40 modules) or PPI4 (for P60 Module), 2,400 W, 1 phase, 5 year warranty, **Made in Germany.**



### The ingenious SunclickPV® ABC principle



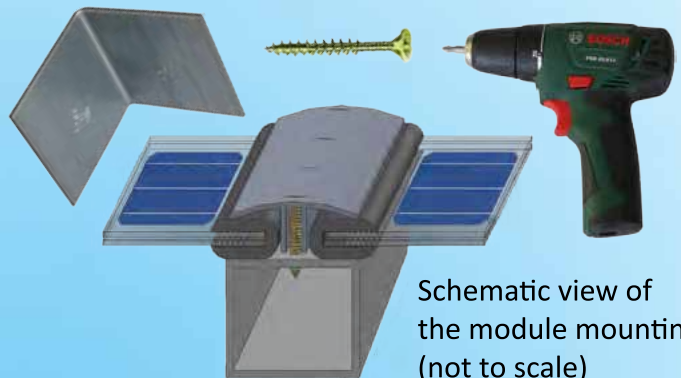
P250 :60 Wp



M170 :40 Wp

#### A: The Sunclick principle

1. An ingeniously simple design made of high quality aluminum profiles.
2. Instruction manual with pictures.
3. Pre-drilled holes to ensure best fitting
4. Self-tapping screws with cross recess can be screwed with any cordless screwdriver.
5. Lightweight yet suitable for high wind and snow loads.



#### B: High-quality Almaden solar modules

##### M40 module:

Semi-transparent : 60 % electrical power, 40 % light.

The partial shading protects against the sun's heat, the glass against UV radiation.

Ideal for applications where light transmission is desired:

- Winter Gardens, patio roofs, swimming pools,
- Carports, parking lots, waiting areas, greenhouses,

##### P60 module:

Semi-transparent: 90 % electrical power, 10 % light.

Shading protects against the sun's heat and UV radiation, allowing enough light to go through.

Ideal for applications where the power production and shading has priority e.g. Carports, parking lots, waiting areas.

#### C: REW Inverters ( Made in Germany)



- Rugged, stylish design
- Highest efficiency and highest yields, even in changing and weak irradiation conditions
- Up to 25 years warranty (optional)
- Flexible and cost-effective PV plant design
- Low input voltage for small PV systems

##### Optional:

Foundation - concrete block 110cm







### Premium-Carport XL Aluminium 5,06 x 5,06 m. 30 year lifetime

**Frame:** aluminum powder coated in white color (RAL 9001).

Delivered in kit : All parts can be easily assembled with angle sections and fixed with the self-tapping stainless steel screws.

A detailed assembly instructions with pictures are included.

**Solar modules:** Premium PV modules of Almaden made of laminated safety glass (LSG ) The two hardened, only 2 mm thick glass panes are almost indestructible and designed for a lifetime of 30 years. A description and the certification of documents are included in the detailed brochure module that can be downloaded with the link to the right.

Available are two types of modules:

**1. Transparent M40 modules** with an output of 170 Wp and a transparency level of %40. **Power per carport with 15 modules: 2.550 Wp.**

**2. Slightly transparent P60 modules** with a degree of transparency of about 10 %. **Power per carport with 15 modules: 3.750 Wp**

The modules are provided on the long sides with a weatherproof seal rubber. With an aluminum bar a secure and tight attachment is made on the aluminum beams (see image on page 2).

**Inverter:** REW Premium Power Inverter - High Class Solution for small PV, PPI2 ( for M40 modules ) or PPI4 ( for P60 Module ) , 2,400 W, 1 phase , 5 year warranty, **Made in Germany.**



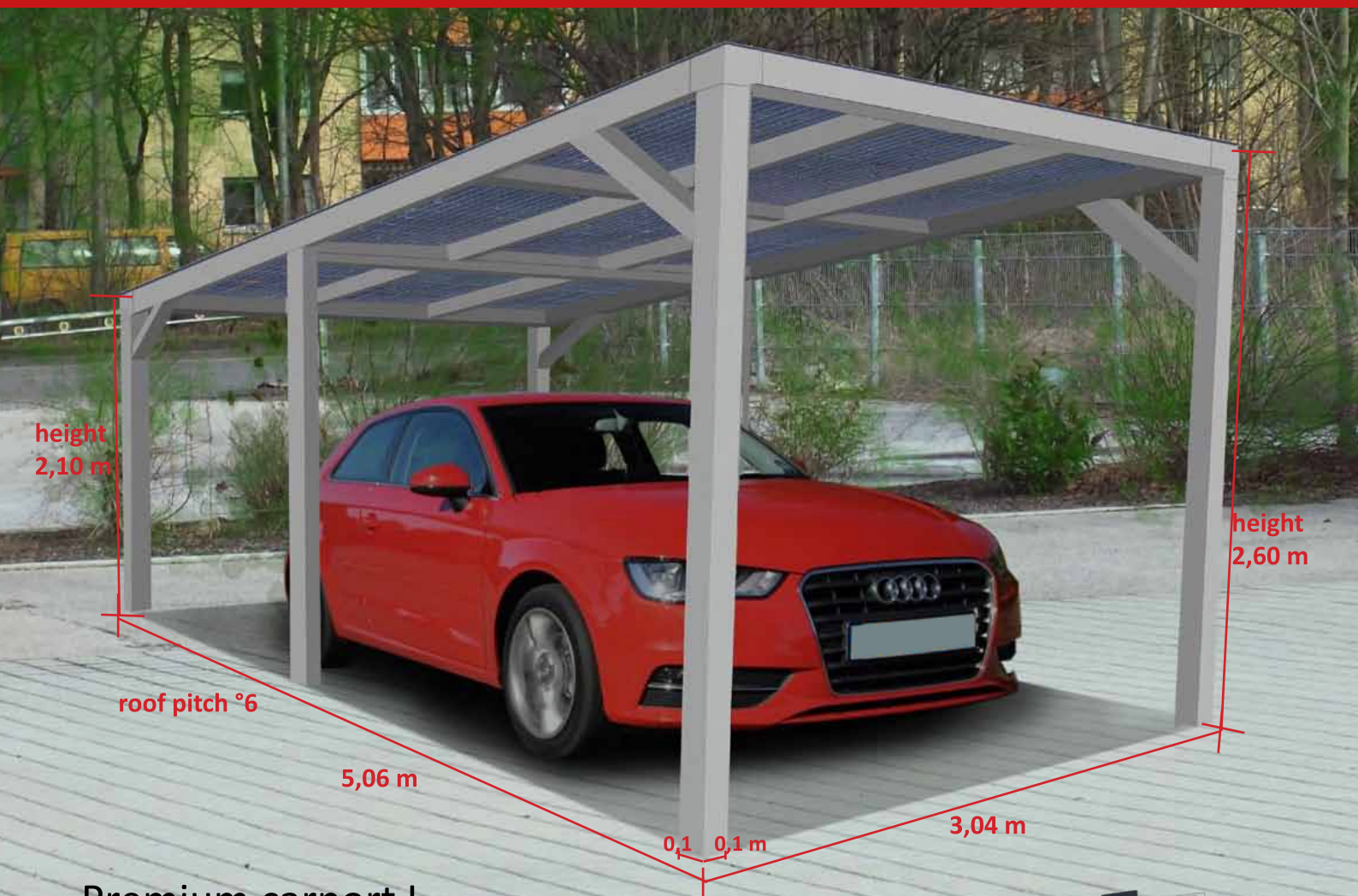
M170 :40 Wp



P250 :60 Wp







## Premium carport L

Aluminum 3.04 x 5.06 m. 30 year lifetime

**Frame:** aluminum powder coated in white color (RAL 9001).

Delivered in a kit: All parts can be easily assembled with angle sections and fixed with the self-tapping stainless steel screws. A detailed assembly manual with pictures is included.

**Solar modules:** Premium PV modules of Almaden made of laminated safety glass (LSG) The two hardened, only 2 mm thick glass panes are almost indestructible and designed for a lifetime of 30 years. A description and the certification documents are included in the detailed module brochure that can be downloaded with the link to the right.

Available are two types of modules:

**1. Transparent M40 modules** with an output of 170 Wp and a transparency level of %40. **Power per Carport with 9 modules: 1530 Wp.**

**2. Slightly transparent P60 modules** with a degree of transparency of about 10 %. **Power per Carport with 9 modules: 2250 Wp.**

The modules are provided on the long sides with a weatherproof seal rubber. With an aluminum bar a secure and tight attachment is made on the aluminum beams (see image on page 2)

**Inverter:** REW Premium Power Inverter - High Class Solution for small PV, PPI2400, 2 W, 1 phase, 5 year warranty, **Made in Germany**.



M170 :40 Wp



P250 :60 Wp





## *Our Tuscan Dream Place*



This architectural gem is also available as a kit with all the parts for a very reasonable price.

**Frame:** aluminum powder coated in white color (RAL 9001). Size M: 2,70 x 3,00 m (also available in size L from May 2014)

**Roof Linkage:** galvanized steel or stainless steel (option).

Delivered as a kit: All parts can be easily assembled for self-assembly with connectors and fixed with self-tapping stainless steel screws. A detailed assembly instructions with pictures are included.

**Solar modules:** Premium PV modules of Almaden made of laminated safety glass (LSG) The two hardened, only 2 mm thick glass panes are almost indestructible and designed for a lifetime of 30 years.

6 Almaden modules M50 (transparent) with 50 solar cells; 215 Wp size approximately 1.97 x 0.99 m = 1.3 kWp  
An information sheet will be sent on request.

**Inverter** REW Premium Power Inverter - High Class Solution for small PV,  
PPI2400 ,2 W, 1 phase, 5 year warranty, Made in Germany.

The European Union is made up of 27 Member States who have decided to gradually link together their know-how resources and destinies. Together, during a period of enlargement of 50 years, they have built a zone of stability, democracy and sustainable development whilst maintaining cultural diversity, tolerance and individual freedoms  
The European Union is committed to sharing its achievements and its values with countries and peoples beyond its borders